

**FIRMWARE RELEASE ANNOUNCEMENT (FRA)**  
**Announcement ID: FRA-2026-03-INT-320WIPN**  
**Release Date: March 2026**  
**Product Category: Intercom**

**Intercom 5.1.1.0.66126\_RD20260203**

**Important Before Upgrading**

To fully apply the improvements introduced by this firmware, please run **the Factory Tool** in addition to the firmware upgrade.

The Factory Tool is **included in the firmware download package**.

The Import Profiles tool 5.0.0.14


	IP Address	MAC Address	Device Name	Product Type	Software ...	Result
<input type="checkbox"/>	172.18.254.107	74:F8:DB:53:B2:90	I6-380IPEN-MVF-V3	BX-291IP5	4.3.0(214...	
<input type="checkbox"/>	192.168.0.246	84:11:C2:CF:FF:EB	I6320LPRMVF1	I6-340LPRN-MVF...	5.3.1(591...	
<input type="checkbox"/>	192.168.0.92	74:F8:DB:55:94:ED	I8-340IP5MVF+	I8-340IP5MVF+	4.2.1(222...	
<input type="checkbox"/>	192.168.0.154	A0:E0:25:03:E1:50	INT-1	INT-320WIPN	5.1.1.0(6...	
<input checked="" type="checkbox"/>	192.168.0.156	A0:E0:25:04:F0:36	INT-3	INT-320WIPN	5.1.1.0(6...	
<input type="checkbox"/>	192.168.0.18	A0:E0:25:04:0D:A4	INT-320WIPN	INT-320WIPN	5.1.1.0(6...	
<input type="checkbox"/>	192.168.0.111	A0:E0:25:04:5D:D2	IP camera01	BLH-THERMAL2-9	5.1.3.0(6...	
<input type="checkbox"/>	192.168.0.222	74:F8:DB:5C:6C:78	IPC	EC-001	5.0.1.0(1...	
<input type="checkbox"/>	192.168.0.153	A0:E0:25:00:98:88	MON-3	TCH7-NVR	1.4.6	
<input type="checkbox"/>	192.168.0.115	A0:E0:25:04:01:E3	MON-TCH7 ARI	MON-TCH7	1.4.6	
<input type="checkbox"/>	192.168.0.90	58:5B:69:21:B2:19	N0Y	NVR16-641600N(...	1.4.13.0	
<input type="checkbox"/>	192.168.0.33	00:18:AE:00:68:4C	N1W_1.4.12	NVR8-32800RFA...	1.4.12	
<input type="checkbox"/>	192.168.0.59	84:11:C2:C7:60:D9	NVR DR Shani	NVR8-16400FA(1U)	1.4.12	
<input type="checkbox"/>	192.168.0.232	A8:A1:59:C2:90:C7	OC-MS-XL(1U)-V2		2.1.4	
<input type="checkbox"/>	192.168.0.190	D0:50:99:FB:FC:3A	OC-MS-XL(1U)-V2		2.1.4	
<input type="checkbox"/>	192.168.0.191	3C:EC:EF:A6:12:0A	OC-RS-16(3U)-V2		2.1.4	

Select All Clear All

User Name: admin Password: .....

Select a profile X:\Factory Tool 5.0.0.14\Intercom.fac Browse

Product Type INT-320WIPN

Logo: 

Set default configuration

## LIST OF IMPROVEMENTS:

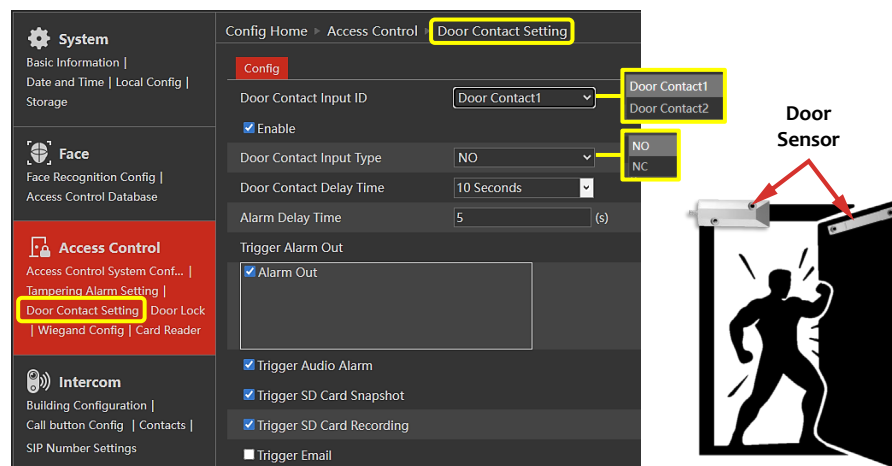
## 1) NEW: DOOR BREACH DETECTION

The intercom now supports Door Breach Detection **when connected to a door contact sensor**.

If the door opens following an authorized action (such as unlocking from the intercom, mobile app, VMS, indoor monitor, or exit button), the event is treated as normal.

If the door opens **without a valid access event**, the system identifies it as a breach and can trigger configured responses such as alarms, audio alerts, snapshots, recordings, or output activation.

This allows the system to detect unauthorized door openings even when the main alarm system is disarmed.



## 2) NEW: FAIL-SAFE / FAIL-SECURE LOCK BEHAVIOR

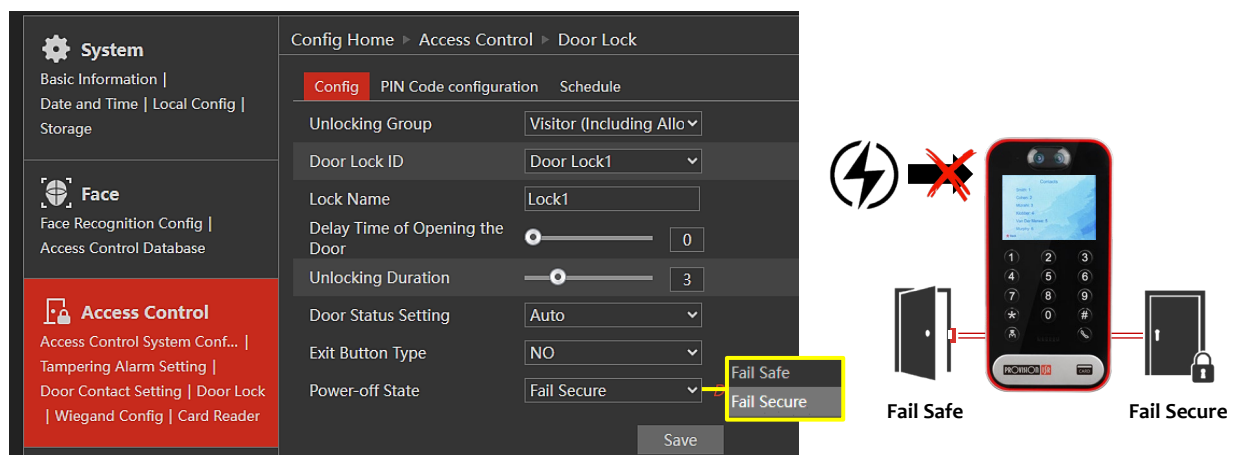
A new configuration option allows defining how the door lock behaves if the intercom **loses power** (12V or PoE).

Two modes are supported:

**Fail Safe** – In the event of power loss, connected locks **automatically unlock**, allowing **occupants to exit** the building freely and prioritizing life safety.

**Fail Secure** – In the event of power loss, **locks remain locked**, maintaining security and preventing unauthorized access from the outside.

This configuration allows installers to choose the most appropriate behavior based on the building's safety and security requirements.

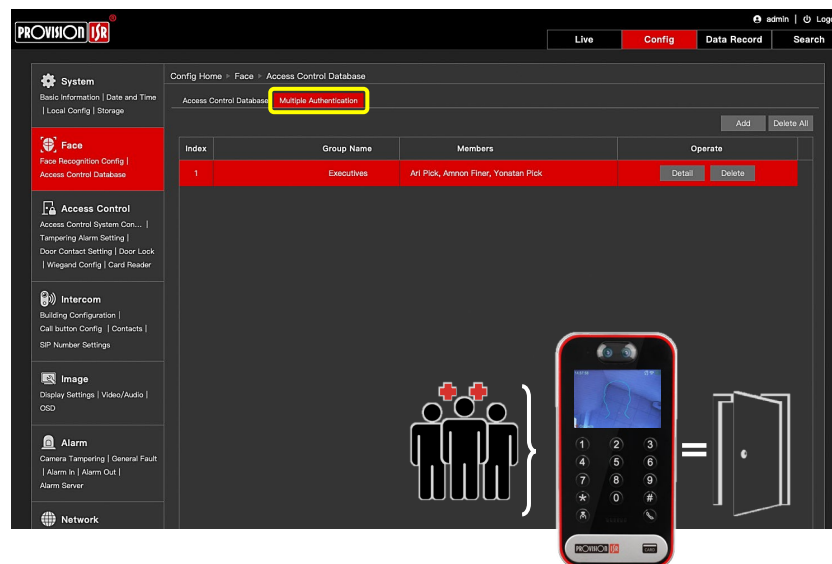


### 3) NEW: MULTIPLE AUTHENTICATION

This feature allows configuring **group-based access authentication** for high-security areas, adding an additional layer of security for sensitive areas where access should be granted only when multiple authorized users are present.

Instead of a single user unlocking the door, a **predefined group of 2 to 5 authorized users must authenticate successfully within 60 seconds for the door to unlock.**

If not all required users are authenticated within 60 seconds, the door remains locked.



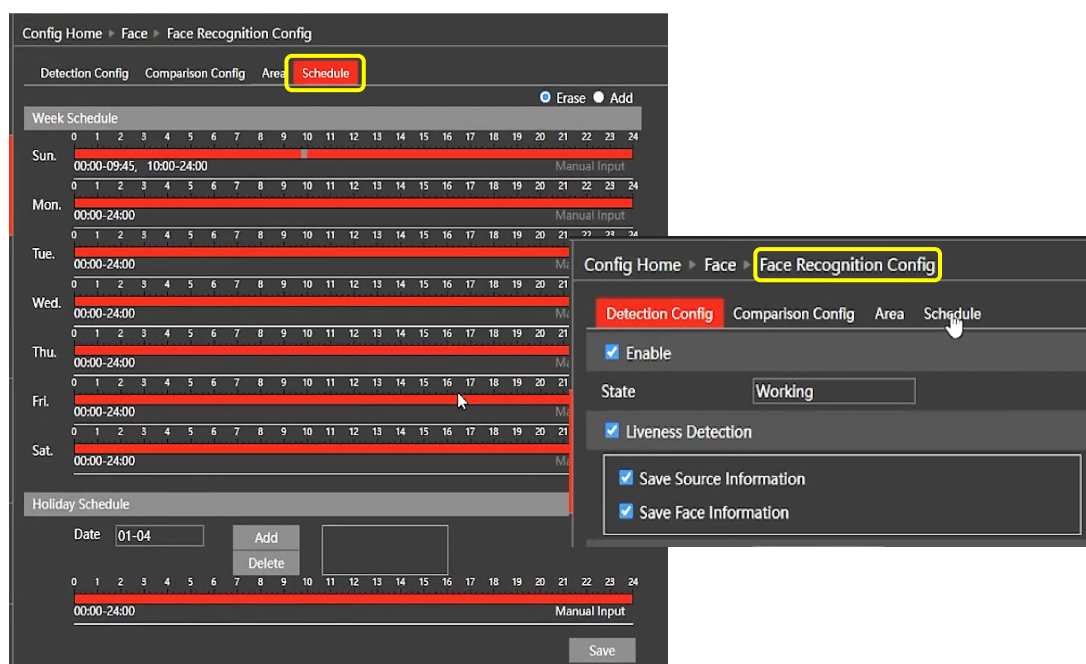
[Watch Tutorial](#)

### 4) NEW: FACE RECOGNITION SCHEDULE

Face recognition can now **be limited to a defined schedule.**

During the configured schedule, recognized faces trigger the normal unlock action. Outside the schedule, face recognition is ignored, and no unlock action is performed.

This allows installers to **restrict face-based access to specific hours**, such as staffed office or reception periods.



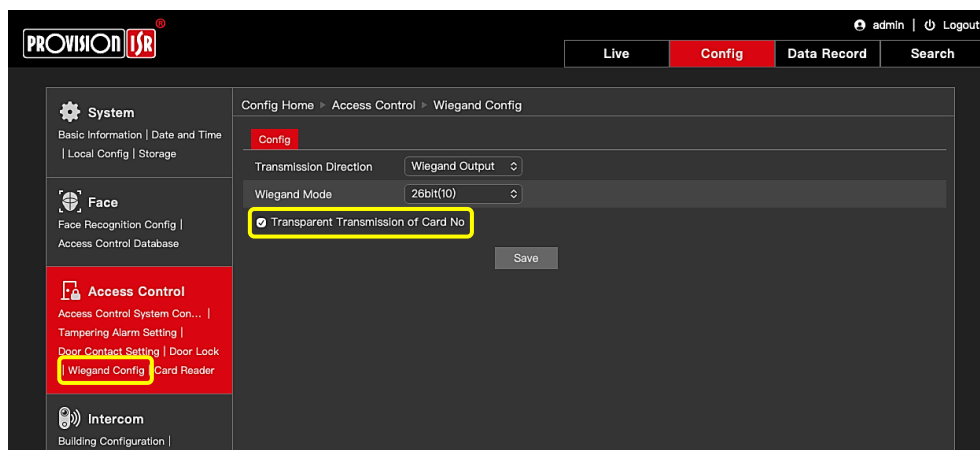
## 5) IMPROVED: TRANSPARENT WIEGAND TRANSMISSION

Improves integration with third-party access control systems using the Wiegand protocol.

**When enabled**, the RFID card number is **transmitted via Wiegand regardless** of the authentication result.

**When disabled**, the card number is sent to the **external controller only after successful** authentication.

This ensures more **accurate event logging** and smoother coordination between the intercom and external access control systems.



## 6) IMPROVED: SIMPLIFIED BATCH IMPORT

The batch import process has been simplified.

Instead of selecting the CSV file and the face image folder separately, you can now **select a single folder containing both files**.

The system automatically detects the CSV file, matches each record to its corresponding face image, and **imports all entries in a single step**.

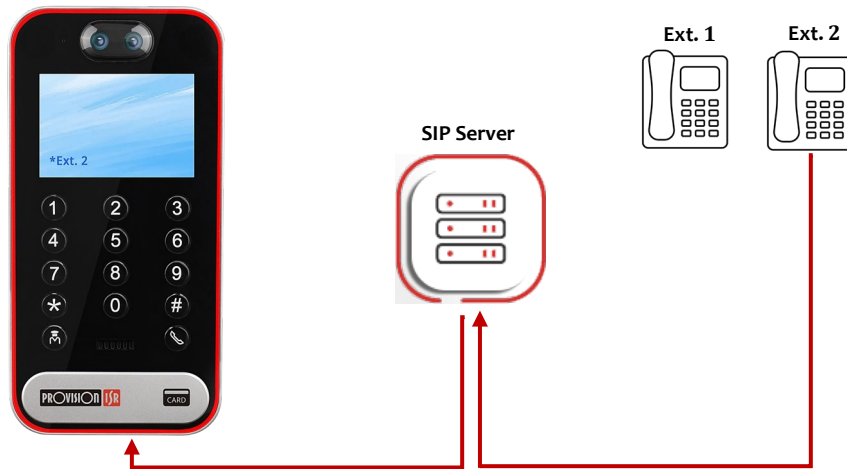


[Watch Tutorial](#)

## 7) IMPROVED: SIP CALL HANDLING

Enhancements have been made to SIP calling functionality.

The intercom now **includes an End Call button and a Call Status indicator**, allowing users to **monitor and terminate active SIP calls directly from the intercom**.



Additionally, **long SIP extensions can now be mapped to shorter intercom numbers**, simplifying dialing while maintaining correct SIP routing.

Config Home > Intercom > SIP Number Settings				
Add Batch Delete				
Index		Room No.	SIP Number	Operate
1	<input type="checkbox"/>	2	6003	Edit Delete
2	<input type="checkbox"/>	1	6002	Edit Delete

## 8) GENERAL IMPROVEMENTS

- Various bug fixes
- Stability enhancements
- Performance optimizations

## 9) REVISION HISTORY

Version	Date	Description
1.0	March 2026	Initial release